

Classroom Projector




On

On remote, press



Off

On remote, press  twice. Note that when you turn off the projector in this way, to turn it back on, you must wait until the green light on the projector stops blinking. If you press Standby only once, it will not turn off.

To get a black screen without turning the projector off:

On remote, press



To turn back on, click AV Mute button again

Can't see computer screen?

On remote, press



Magnify what's on the screen

On remote, press



Adjust volume for movies or presentations

LBMS: On wall by computer

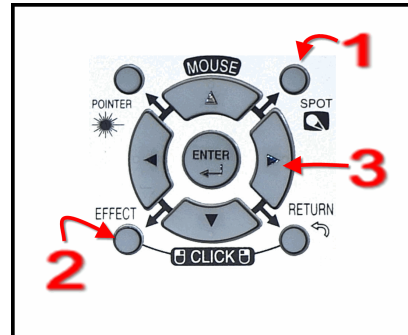
Parkside: Computer speakers



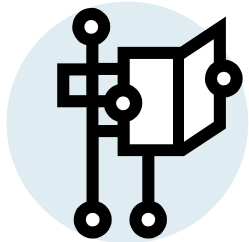
Note: Volume controls on remote are not connected to any speakers so will not work

To spotlight a place on the screen:

- Click the Spot button
- Click the effect to size the 'spot'
- Use the arrow keys to move 'spot'



Main Inside Heading



Caption describing picture or graphic.

The most important information is included here on the inside panels. Use these panels to introduce your organization and describe specific products or services. This text should be brief and should entice the reader to want to know more about the product or service.

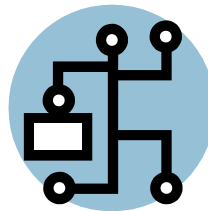
vice.

You can use secondary headings to organize your text to make it more scannable for the reader.

Lorem ipsum dolor sit amet, consectetur adipiscing elit, sed diam nonummy nibh euismod tincidunt ut laoreet dolore et accumsan et iusto odio dignissim qui mmy nibh euismod tincidunt ut laoreet dolore magna aliquam erat volutpat.

SECONDARY HEADING

Lorem ipsum dolor sit amet, consectetur adipiscing elit, sed diam nonummy nibh euismod tincidunt ut laoreet dolore magna aliquam erat volutpat. Ut wisis enim ad



Caption describing picture or graphic.

minim veniam, consequat, vel illum dolore eu feugiat nulla facilisis at vero eros et accumsan et iusto odio dignissim qui blandit praesent luptatum. Lorem ipsum dolor sit amet, consectetur adipiscing elit, sed diam nonummy nibh euismod tincidunt ut laoreet dolore magna aliquam erat volutpat. Ut wisis enim ad minim veniam, consequat, vel illum dolore eu feugiat

nulla facilisis at vero eros et accumsan.

SECONDARY HEADING

Lorem ipsum dolor sit amet, consectetur adipiscing elit, sed diam nonummy nibh euismod tincidunt ut laoreet dolore magna aliquam erat volutpat. Ut wisis enim ad minim veniam, quis nostrud exercitation ullamcorper suscipit lobortis nisl ut aliquip ex ea commodo consequat. Duis te feugifacilisi. Duis autem dolor in hendrerit in vulputate velit esse molestie consequat, vel illum dolore eu feugiat nulla facilisis at vero eros et accumsan et iusto odio dignissim qui

blandit praesent luptatum zzril delenit augue duis dolore te feugiat nulla facilisis. Ut wisis enim ad minim veniam, quis nostrud exercitation ullamcorper suscipit lobortis nisl ut aliquip ex ea commodo consequat. Duis te feugifacilisi per suscipit lobortis nisl ut aliquip ex ea commodo consequat. Lorem ipsum dolor sit amet, consectetur adipiscing elit, sed diam nonummy nibh euismod tincidunt ut laoreet dolore magna aliquam erat volutpat.

WESTLAKE CITY SCHOOL DISTRICT

Primary Business Address

Your Address Line 2

Your Address Line 3

Your Address Line 4

Phone: 555-555-5555

Fax: 555-555-5555

E-mail: someone@example.com